

Relocating to London in 2024



Welcome!

We will start in a few minutes



Relocating to London, made simple

www.simplylondonrelocation.com

Simply London

Relocating to London, made simple

Relocating to London in 2024



About Simply London – the leading relocation agency



Who we are

Simply London is the leading Relocation Agency for expatriates moving from abroad to London.

Relocation services for London

Our relocation services cover everything an expatriate might need when moving to London: housing, schooling, settling-in, shipping, language training, cultural coaching.

Track record

We have already helped more than 600 individuals and employees move effortlessly to London and the UK.





Relocating to London in 2024

Agenda

- *Welcome & housekeeping*
- Neighbourhoods
- Renting
- Utilities
- Bank account
- Social security
- Health system

- Q&A



How to choose a London neighbourhood

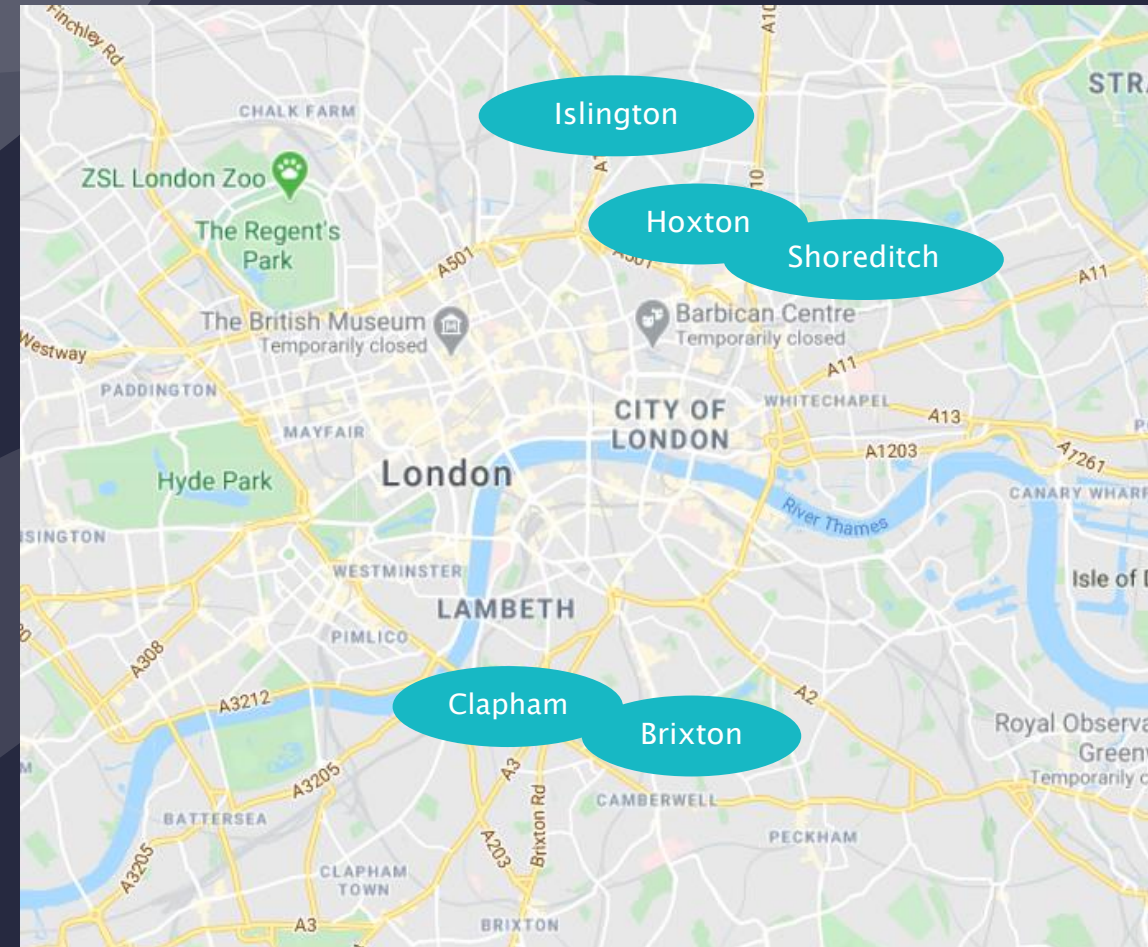
- **Space and budget:** the more central, the less space you will get for your budget
- **Urban vs. suburban:** do you like to feel the 24 hour London vibe around you, or do you prefer to feel the peace and quiet
- **Community:** is it important for you to belong to a local community?
- **Amenities and facilities:** are there places that you really want to be close to? Such as a park, sports facilities, shopping facilities, etc.
- **Transport facilities:** last but not least, how close do you want or need to be to transport like buses, underground, etc.



Popular London neighbourhoods

Popular London neighbourhoods for professionals:

- Brixton
- Shoreditch
- Clapham
- Hoxton
- Islington



Popular London family neighbourhoods

Popular London neighbourhoods for families:

- Richmond
- Wimbledon
- Clapham
- Fulham
- Hampstead



London rental prices

- 1 bedroom: minimum £ 1,500 – 1,750/month
- 2 bedrooms: minimum £2,000 – 2,500/month
- 3 bedrooms: minimum £ 2,700 – 3,000/month
- 4 bedrooms: minimum £ 3,500/month



Rental process in London

1. View – virtually or physically
2. Make an offer with the estate agent
3. Pay the holding deposit (1 week)
4. Complete the background checks
5. Sign your tenancy agreement
6. Pay the first month rent and security deposit (4 or 5 weeks)
7. Move in!



Rental process in London

- FAQ
 - Time for the rental process to complete
 - Holding deposit vs. security deposit
 - Paying rent each week or each month?



Utilities

- Electricity - obligatory
- Gas - obligatory
- Water - obligatory
- Council Tax - obligatory
- TV Licence – obligatory



Bank account

- Digital versus traditional banks
- How to open an account
- When to open an account



Social security

- NHS vs. NIN
- Registering with the public health system (NHS)
- Obtaining a National Insurance Number (NIN)



Health system

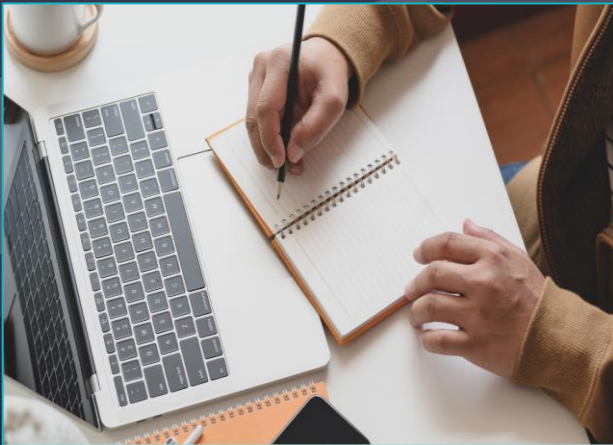
- Public vs. private health system
 - Do you need both?
 - Private:
 - On-demand versus insurance
 - Benefits
 - Cost



More information? Need help? We have something for everyone...

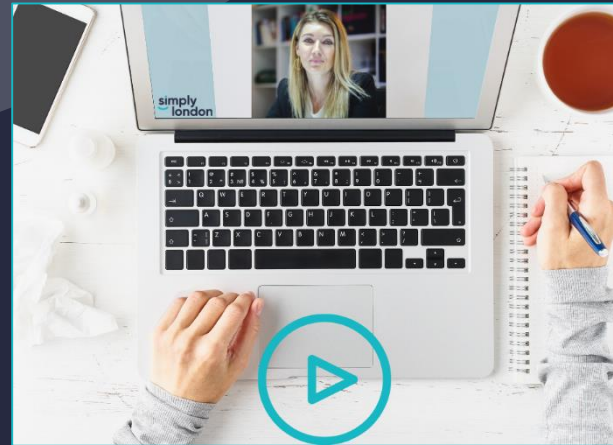
simply
london

London Knowledge Base
Free



<https://simplylondonrelocation.com/all-about-london/london-knowledge-base/>

London Membership
£35 for one month



<https://simplylondonrelocation.com/memberships/>

Relocation Services
From £ 2,200



<https://simplylondonrelocation.com/our-relocation-services/>



Any questions?
Please contact us

simply
london



Simply London

Phone: +44 7752 343 787

E-mail: sylvie@simplylondonrelocation.com

Web: www.simplylondonrelocation.com



**Did you enjoy this free webinar?
Please donate £1 to UNICEF 😊**

**simply
london**

We do not charge a fee for attending our webinar sessions, however if you have found today valuable, we would be very grateful for a donation to our appointed charity UNICEF, in recognition of the free advice you have received today.

UNICEF is a worldwide charity responsible for providing humanitarian and developmental aid to Children.

**Thank you for joining Simply London in raising money
to build a better life for every child - every donation
helps to change the lives of children in danger.**

The following link will be shared with you in a follow up email after today's session:

<https://www.justgiving.com/page/simplylondon>

